

SBC R 0908

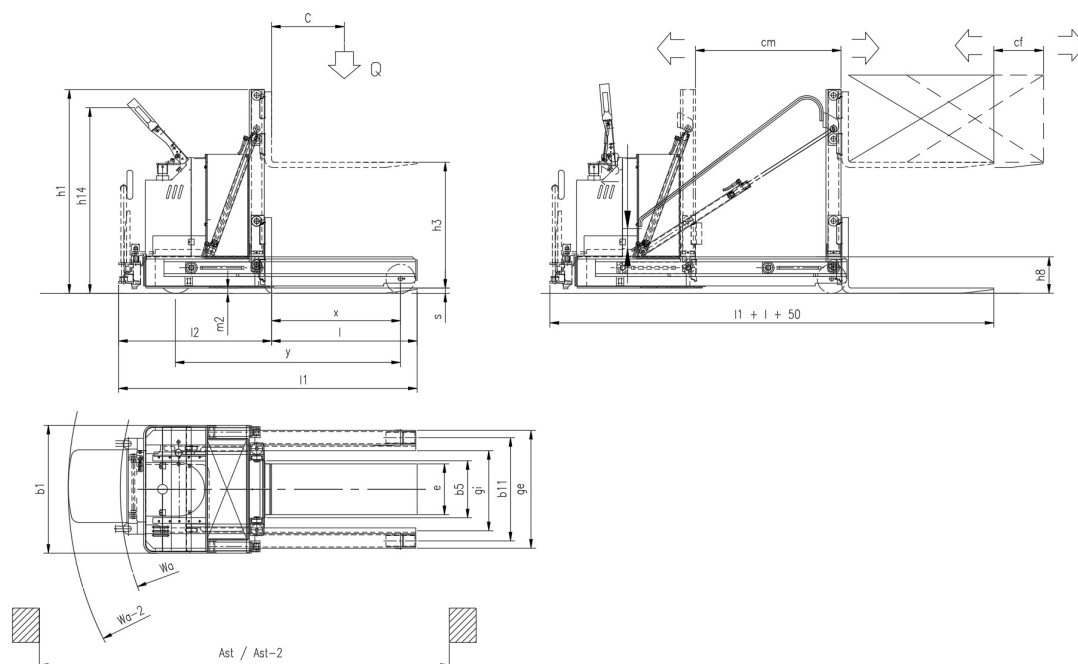
CS Italia s.r.l.



Optional su richiesta info@carrellispeciali.it ✉

SBC R 0908

CS Italia s.r.l.



Illustrazioni e dati tecnici non sono impegnativi. Il costruttore si riserva il diritto di apportare modifiche senza preavviso.

Tipologia SBC R 0908

Categoria Retrattili

General info	1.1	Manufacturer			CSI s.r.l.	
	1.2	Model			SBC R 0908	
	1.3	Drive			elettrico	
	1.4	Operator type			a timone	
	1.5	Load capacity	Q	t	0.8	
	1.6	Load centre	c	mm	500	
	1.8	Load distance to wheel axle	x	mm	885	
	1.9	Wheelbase	y	mm	1550	
	Weights	2.1	Truck weight without battery		Kg	2100
Wheels and chassis	3.1	Wheels			Poliuretano	
	3.2	Wheels size front		mm	154x100	
	3.3	Wheels size rear		mm	200X80	
	3.5	Number of rear/front wheels (x = Traction wheel)			1x+2	
	3.7	Rear wheelbase	b11	mm	710	
	3.9	Overall width legs	ge	mm	810	
	3.10	Inside width legs	gi	mm	530	
	3.11	Legs height	h8	mm	280	
	Dimensions	4.2	Height mast lowered	h1	mm	1450
4.4		Lift height	h3	mm	850	
4.9		Height of tiller (min/max)	h14	mm	975/1535	
4.10		Mast raise	cm	mm	1000	
4.11		Forks raise	cf	mm	340	
4.19		Overall length	l1	mm	1880	
4.20		Length to face of forks	l2	mm	880	
4.21		Overall width	b1	mm	862	
4.22		Forks dimensions	s/e/l	mm	35/350/1000	
4.23		Carriage forks			FEM II A	
4.31		Ground clearance		mm	40	
4.32		Distanza da piano di lavoro a inizio forza	m2	mm	40	
4.34		Aisle width	ast	mm	2820	
4.34a		Aisle width with pallet	ast	mm	2420	
4.35		Turning radius	wa	mm	2310	
4.35a		Turning radius with platform	wa-2	mm	2310	
Performance		5.1	Travel speed with/without load		Km/h	2/5
		5.2	Lifting speed with/without load		m/s	0.11/0.33
	5.3	Lowering speed with/without load		m/s	0.5/0,2	
	5.8	Maximum gradeability with/without load		%	1/3	
	5.10	Service brake			elettrico	
Motor	6.1	Traction motor S2 60 min.		Kw	2.5	
	6.2	Lift motor S3		Kw	2.2	
	6.3	Battery			Piombo acido	
	6.4	Battery - voltage and nominal capacity		V/Ah	24V/240Ah	
	6.5	Battery weight		Kg	210	
	Dim. batteria	Battery size		mm	680/270/660	
Other	8.1	Traction control			proporzionale	

DATI TECNICI 8.4

Noise level driver place

<70