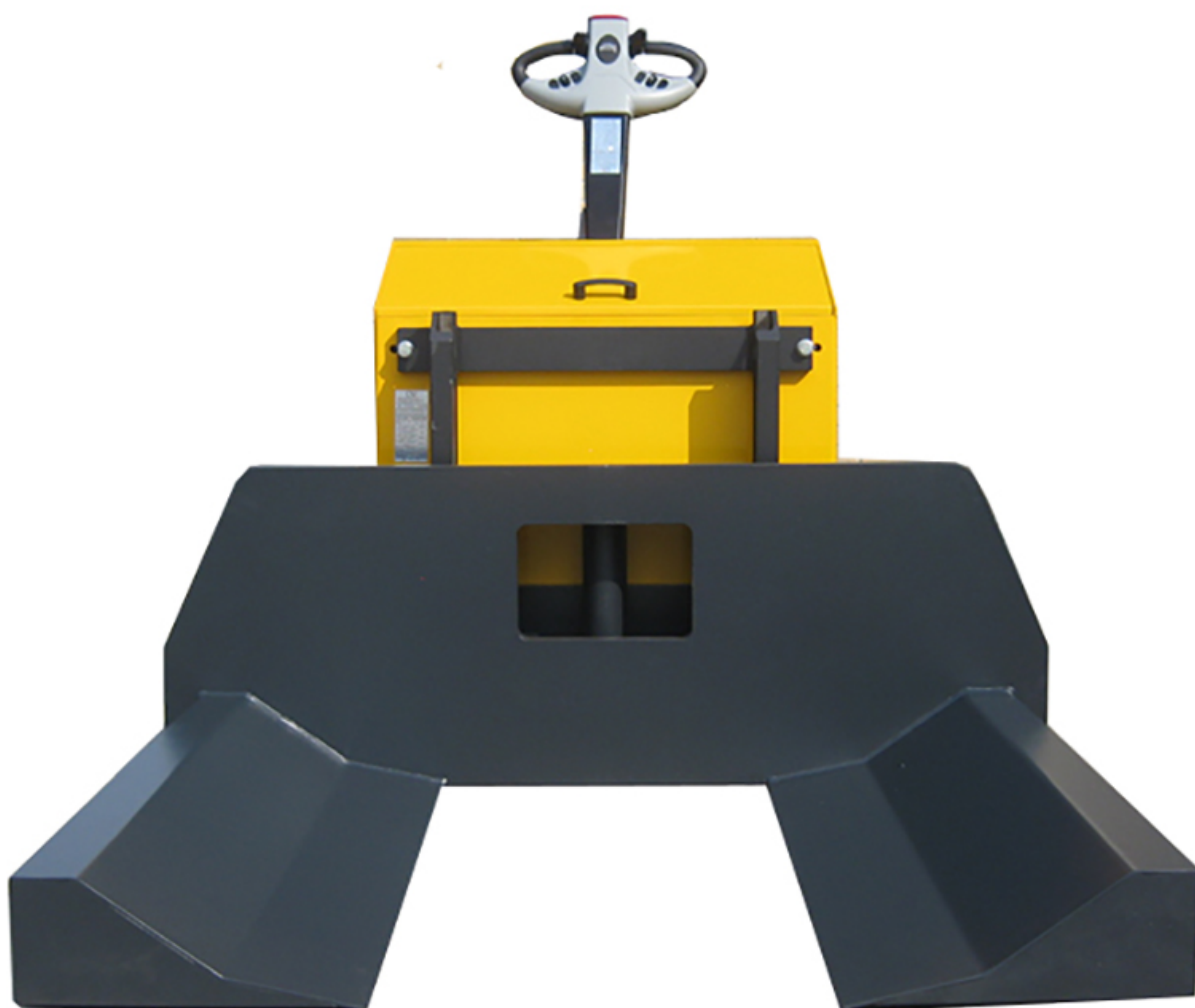


K9 SBM XT 30

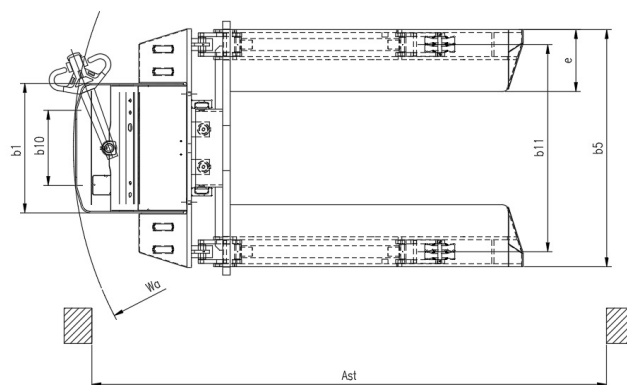
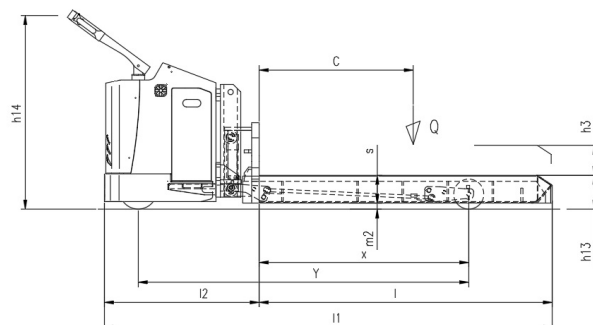
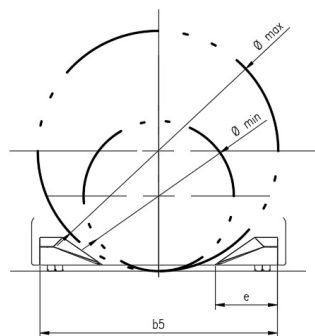
CS Italia s.r.l.



Optional su richiesta info@carrellispeciali.it 

K9 SBM XT 30

CS Italia s.r.l.



Illustrazioni e dati tecnici non sono impegnativi. Il costruttore si riserva il diritto di apportare modifiche senza preavviso.

Tipologia K9 SBM XT 30

Categoria Portabobine

General info	1.1	Manufacturer			CSI s.r.l.
	1.2	Model			K9 SBM XT 30
	1.3	Drive			elettrico AC
	1.4	Operator type			a timone
	1.5	Load capacity	Q	t	3
	1.6	Load centre	c	mm	1000
	1.8	Load distance to wheel axle	x	mm	1400
	1.9	Wheelbase	y	mm	2200
	Weights				
	2.1	Truck weight without battery		Kg	1300
Wheels and chassis					
	3.1	Wheels			Poliuretano
	3.2	Wheels size front		mm	254x100
	3.3	Wheels size rear		mm	200X50
	3.4	Additional wheels size		mm	150x50
	3.5	Number of rear/front wheels (x = Traction wheel)			1x+2/2+2
	3.6	Front wheelbase	b10	mm	500
	3.7	Rear wheelbase	b11	mm	1380
Dimensions					
	4.4	Lift height	h3	mm	200
	4.9	Height of tiller (min/max)	h14	mm	975/1535
	4.13	Minimum diameter	Ø min	mm	1000
	4.14	Maximum diameter	Ø max	mm	1600
	4.15	Height forks lowered	h13	mm	230
	4.19	Overall length	l1	mm	2980
	4.20	Length to face of forks	l2	mm	1030
	4.21	Overall width	b1	mm	862
	4.22	Forks dimensions	s/e/l	mm	185/415/1950
	4.25	Overall forks width size	b5	mm	1580
	4.32	Distanza da piano di lavoro a inizio forca	m2	mm	40
	4.35	Turning radius	wa	mm	2440
Performance					
	5.1	Travel speed with/without load		Km/h	5/6
	5.2	Lifting speed with/without load		m/s	0,04/0,05
	5.3	Lowering speed with/without load		m/s	0,26/0,06
	5.8	Maximum gradeability with/without load		%	3/5
	5.10	Service brake			elettrico
Motor					
	6.1	Traction motor S2 60 min.		Kw	2.5
	6.2	Lift motor S3		Kw	2.2
	6.3	Battery			Piombo acido
	6.4	Battery - voltage and nominal capacity		V/Ah	24V / 240Ah
	6.5	Battery weight		Kg	210
	Dim. batteria	Battery size		mm	810/257/575
Other					
	8.1	Traction control			proporzionale
	8.4	Noise level driver place			<70