

SBP XT HD 4VR 3525

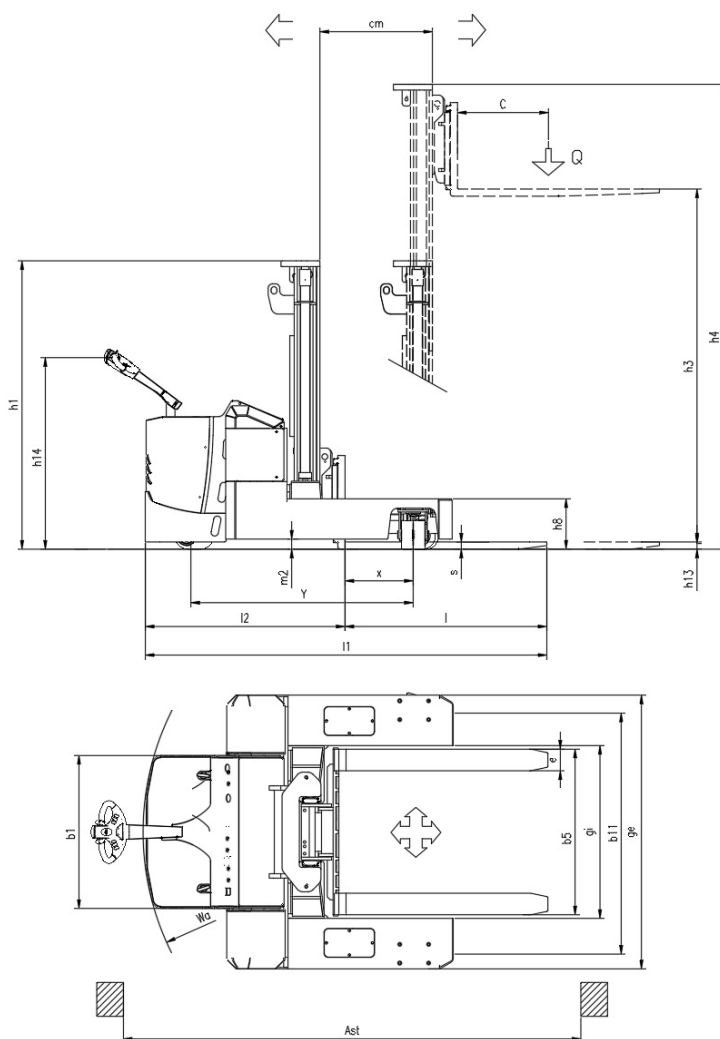
CS Italia s.r.l.



Optional su richiesta info@carrellispeciali.it 

SBP XT HD 4VR 3525

CS Italia s.r.l.



Illustrazioni e dati tecnici non sono impegnativi. Il costruttore si riserva il diritto di apportare modifiche senza preavviso.

Tipologia SBP XT HD 4VR 3525

Categoria

| | | | | | |
|---------------------------|--|-----------------------------|----|------|--------------------|
| General info | 1.1 | Manufacturer | | | CSI s.r.l. |
| | 1.2 | Model | | | SBP XT HD 4VR 3525 |
| | 1.3 | Drive | | | elettrico AC |
| | 1.4 | Operator type | | | a timone |
| | 1.5 | Load capacity | Q | t | 2.5 |
| | 1.6 | Load centre | c | mm | 600 |
| | 1.8 | Load distance to wheel axle | x | mm | 450 |
| | 1.9 | Wheelbase | y | mm | 1540 |
| | Weights | | | | |
| 2.1 | Truck weight without battery | | | Kg | 4030 |
| Wheels and chassis | | | | | |
| 3.1 | Wheels | | | | Poliuretano |
| 3.2 | Wheels size front | | mm | | 350x140 |
| 3.3 | Wheels size rear | | mm | | 200x50 |
| 3.5 | Number of rear/front wheels (x = Traction wheel) | | | | 1x/2+2 |
| 3.7 | Rear wheelbase | b11 | mm | | 1670 |
| 3.9 | Overall width legs | ge | mm | | 1900 |
| 3.10 | Inside width legs | gi | mm | | 1200 |
| 3.11 | Legs height | h8 | mm | | 350 |
| Dimensions | | | | | |
| 4.1 | Tilt | | | ° | -1/+2 |
| 4.2 | Height mast lowered | h1 | mm | | 2500 |
| 4.4 | Lift height | h3 | mm | | 3450 |
| 4.5 | Height mast extended | h4 | mm | | 4230 |
| 4.9 | Height of tiller (min/max) | h14 | mm | | 975/1535 |
| 4.10 | Mast raise | cm | mm | | 780 |
| 4.15 | Height forks lowered | h13 | mm | | 60 |
| 4.19 | Overall length | l1 | mm | | 2585 |
| 4.20 | Length to face of forks | l2 | mm | | 1385 |
| 4.21 | Overall width | b1 | mm | | 1076 |
| 4.22 | Forks dimensions | s/e/l | mm | | 50/120/1200 |
| 4.23 | Carriage forks | | | | FEM 3A |
| 4.25 | Overall forks width size | b5 | mm | | 260-1100 |
| 4.31 | Ground clearance | | mm | | 40 |
| 4.34 | Aisle width | ast | mm | | 3170 |
| 4.35 | Turning radius | wa | mm | | 1880 |
| Performance | | | | | |
| 5.1 | Travel speed with/without load | | | Km/h | 3/6 |
| 5.2 | Lifting speed with/without load | | | m/s | 0.11/0.33 |
| 5.3 | Lowering speed with/without load | | | m/s | 0.5/0.2 |
| 5.8 | Maximum gradeability with/without load | | | % | 1/3 |
| 5.10 | Service brake | | | | elettrico |
| Motor | | | | | |
| 6.1 | Traction motor S2 60 min. | | | Kw | 3 |
| 6.2 | Lift motor S3 | | | Kw | 4 |
| 6.3 | Battery | | | | Piombo acido |
| 6.4 | Battery - voltage and nominal capacity | | | V/Ah | 24V 420 Ah |
| 6.5 | Battery weight | | | Kg | 320 |
| Dim. batteria | Battery size | | | mm | 1015/255/575 |
| Other | | | | | |
| 8.1 | Traction control | | | | elettronico |

DATI TECNICI 8.4

| | | | |
|--------------------------|--|--|-----|
| Noise level driver place | | | <70 |
|--------------------------|--|--|-----|