

SBC OB TR XTS 1608

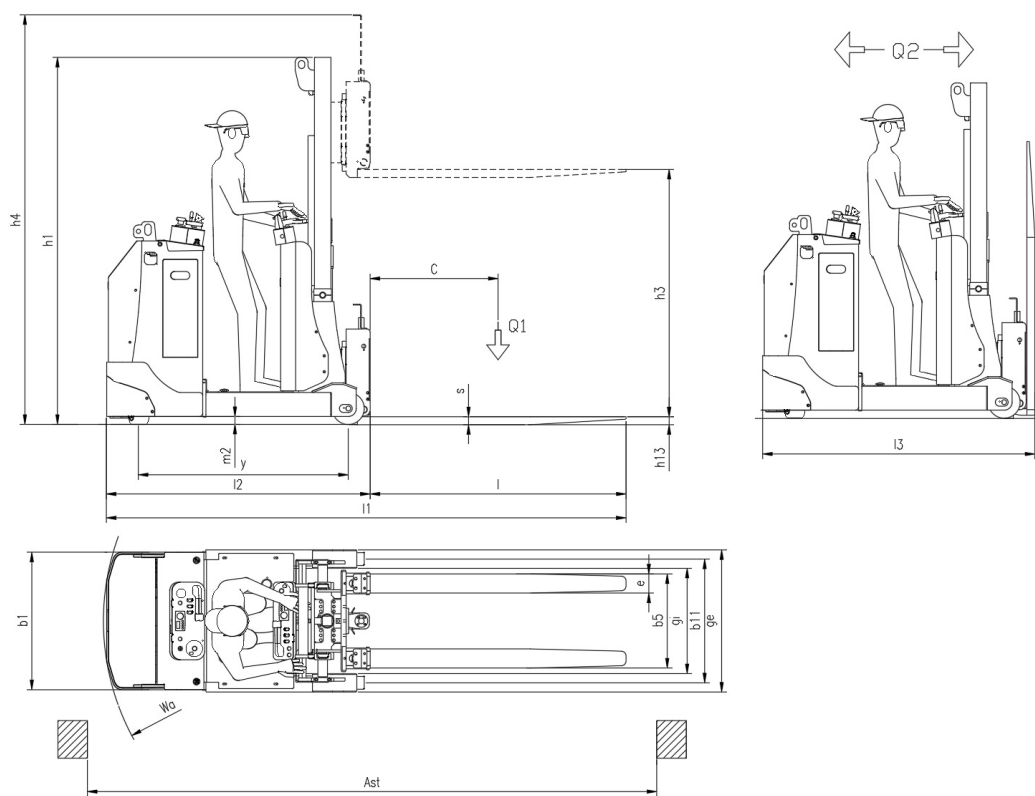
CS Italia s.r.l.



Optional su richiesta info@carrellispeciali.it 

SBC OB TR XTS 1608

CS Italia s.r.l.



Illustrazioni e dati tecnici non sono impegnativi. Il costruttore si riserva il diritto di apportare modifiche senza preavviso.

Tipologia SBC OB TR XTS 1608

Categoria Contrappesati

General info	1.1	Manufacturer			CSI s.r.l.
	1.2	Model			SBC OB TR XTS 1608
	1.3	Drive			elettrico AC
	1.4	Operator type			a volante
	1.5	Load capacity	Q	t	0.8
	1.5a	Towing capacity	Q1	t	2
	1.6	Load centre	c	mm	800
	1.9	Wheelbase	y	mm	1320
	Weights				
	2.1	Truck weight without battery		Kg	2100
Wheels and chassis					
	3.1	Wheels			Poliuretano
	3.2	Wheels size front		mm	254x100
	3.3	Wheels size rear		mm	200x80
	3.5	Number of rear/front wheels (x = Traction wheel)			1x/2
	3.7	Rear wheelbase	b11	mm	770
	3.9	Overall width legs	ge	mm	890
	3.10	Inside width legs	gi	mm	660
Dimensions					
	4.1	Tilt		°	-1/+2
	4.2	Height mast lowered	h1	mm	2300
	4.4	Lift height	h3	mm	1550
	4.5	Height mast extended	h4	mm	2550
	4.15	Height forks lowered	h13	mm	50
	4.19	Overall length	l1	mm	3250
	4.20	Length to face of forks	l2	mm	1650
	4.21	Overall width	b1	mm	870
	4.22	Forks dimensions	s/e/l	mm	35/100/1200
	4.23	Carriage forks			FEM 2A
	4.31	Ground clearance		mm	50
	4.32	Distanza da piano di lavoro a inizio forca	m2	mm	50
	4.34	Aisle width	ast	mm	3560
	4.35	Turning radius	wa	mm	1550
Performance					
	5.1	Travel speed with/without load		Km/h	3/6
	5.2	Lifting speed with/without load		m/s	0,11/0,33
	5.3	Lowering speed with/without load		m/s	0,5/0,2
	5.8	Maximum gradeability with/without load		%	1/3
	5.10	Service brake			elettrico
Motor					
	6.1	Traction motor S2 60 min.		Kw	2.5
	6.2	Lift motor S3		Kw	3
	6.3	Battery			Piombo acido
	6.4	Battery - voltage and nominal capacity		V/Ah	24V /360Ah
	6.5	Battery weight		Kg	280
	Dim. batteria	Battery size		mm	810/210/450h
Other					
	8.1	Traction control			proporzionale
	8.4	Noise level driver place			<70