

**K9 T 20**

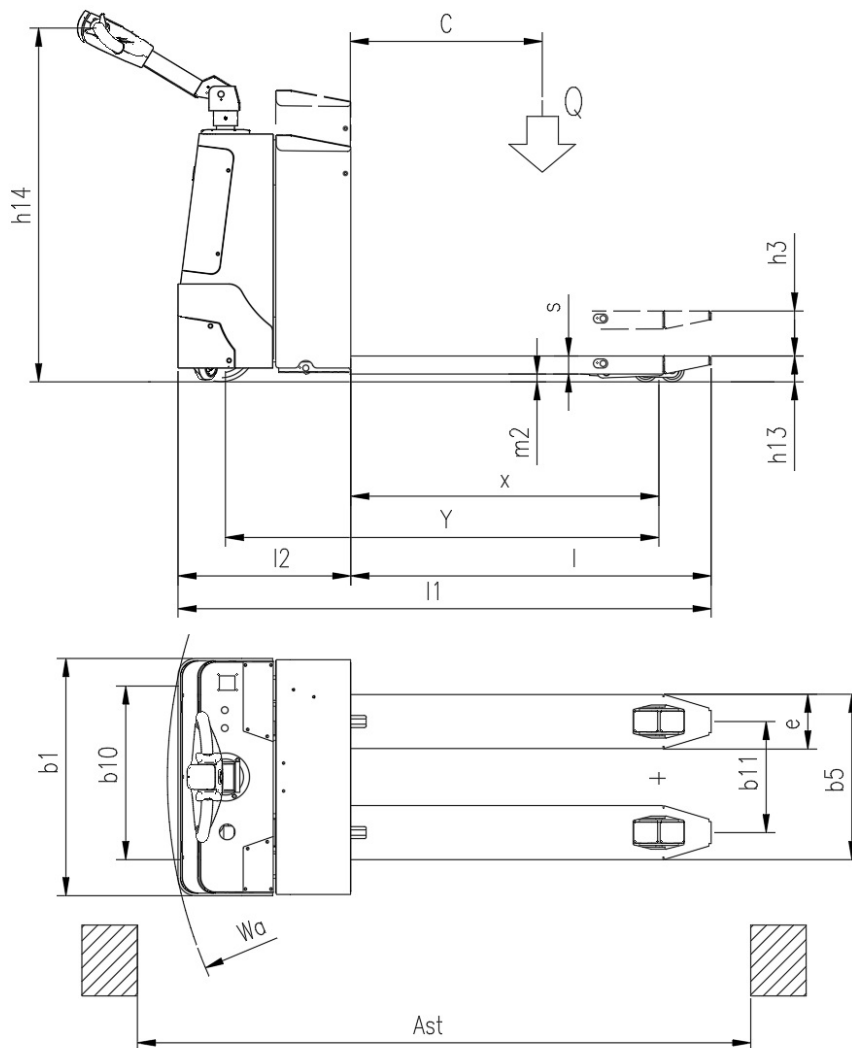
CS Italia s.r.l.



Optional su richiesta [info@carrellispeciali.it](mailto:info@carrellispeciali.it) ✉

# K9 T 20

CS Italia s.r.l.



Illustrazioni e dati tecnici non sono impegnativi. Il costruttore si riserva il diritto di apportare modifiche senza preavviso.

**Tipologia** K9 T 20

**Categoria** Acciaio Inox

<b>General info</b>	1.1	Manufacturer			CSI s.r.l.
	1.2	Model			K9 T 20
	1.3	Drive			elettrico AC
	1.4	Operator type			a timone
	1.5	Load capacity	Q	t	2
	1.6	Load centre	c	mm	600
	1.8	Load distance to wheel axle	x	mm	1025
	1.9	Wheelbase	y	mm	1445
	<b>Weights</b>				
	2.1	Truck weight without battery		Kg	400
<b>Wheels and chassis</b>					
	3.1	Wheels			Poliuretano
	3.2	Wheels size front		mm	235x75
	3.3	Wheels size rear		mm	70x80
	3.4	Additional wheels size		mm	100X38
	3.5	Number of rear/front wheels (x = Traction wheel)			1x 1+1/2+2
	3.6	Front wheelbase	b10	mm	500
	3.7	Rear wheelbase	b11	mm	360
<b>Dimensions</b>					
	4.4	Lift height	h3	mm	150
	4.9	Height of tiller (min/max)	h14	mm	975/1535
	4.15	Height forks lowered	h13	mm	90
	4.19	Overall length	l1	mm	1850
	4.20	Length to face of forks	l2	mm	660
	4.21	Overall width	b1	mm	790
	4.22	Forks dimensions	s/e/l	mm	60/180/1190
	4.25	Overall forks width size	b5	mm	550
	4.31	Ground clearance		mm	30
	4.32	Distanza da piano di lavoro a inizio forca	m2	mm	30
	4.34	Aisle width	ast	mm	2050
	4.35	Turning radius	wa	mm	1640
<b>Performance</b>					
	5.1	Travel speed with/without load		Km/h	4/6
	5.2	Lifting speed with/without load		m/s	0.11/0.33
	5.3	Lowering speed with/without load		m/s	0.5/0.2
	5.8	Maximum gradeability with/without load		%	1/2
	5.10	Service brake			elettrico
<b>Motor</b>					
	6.1	Traction motor S2 60 min.		Kw	1.2
	6.2	Lift motor S3		Kw	2.2
	6.3	Battery			GEL
	6.4	Battery - voltage and nominal capacity		V/Ah	24V 250
	6.5	Battery weight		Kg	200
	Dim. batteria	Battery size		mm	720/210/625
<b>Other</b>					
	8.1	Traction control			proporzionale
	8.4	Noise level driver place			<70