

TRS XTS

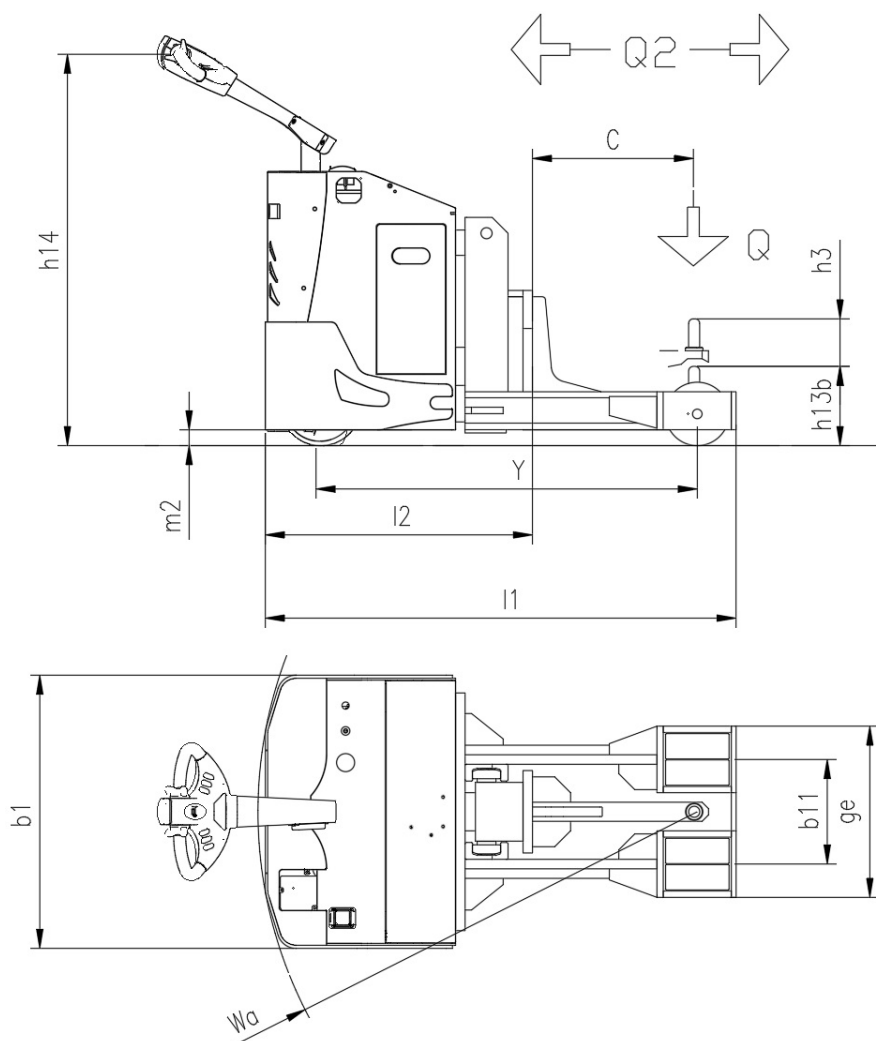
CS Italia s.r.l.



Optional su richiesta info@carrellispeciali.it 

TRS XTS

CS Italia s.r.l.



Illustrazioni e dati tecnici non sono impegnativi. Il costruttore si riserva il diritto di apportare modifiche senza preavviso.

Tipologia TRS XTS

Categoria

General info	1.1	Manufacturer			CSI s.r.l.
	1.2	Model			TRS XTS
	1.3	Drive			elettrico AC
	1.4	Operator type			a timone
	1.5	Load capacity	Q	t	1
	1.5a	Towing capacity	Q1	t	2
	1.6	Load centre	c	mm	500
	1.9	Wheelbase	y	mm	1000
	Wheels and chassis	3.1	Wheels		
3.2		Wheels size front		mm	254x100
3.3		Wheels size rear		mm	200x80
3.5		Number of rear/front wheels (x = Traction wheel)			1X/2+2
3.7		Rear wheelbase	b11	mm	330
3.9		Overall width legs	ge	mm	540
Dimensions		4.4	Lift height	h3	mm
	4.12	Tow pin diameter	Øp	mm	40
	4.15b	Pin height from the ground	h13b	mm	360
	4.19	Overall length	l1	mm	1420
	4.20	Length to face of forks	l2	mm	840
	4.21	Overall width	b1	mm	862
	4.31	Ground clearance		mm	40
	4.35	Turning radius	wa	mm	1385
Performance	5.10	Service brake			elettrico
Motor	6.1	Traction motor S2 60 min.		Kw	2.5
	6.2	Lift motor S3		Kw	2.2
	6.3	Battery			Piombo acido
	6.4	Battery - voltage and nominal capacity		V/Ah	24V 210Ah
	6.5	Battery weight		Kg	210
	Dim. batteria	Battery size		mm	810/210/450
	Other	8.1	Traction control		
8.4		Noise level driver place			<70