

SBCC-Z XTS ASPO 2506

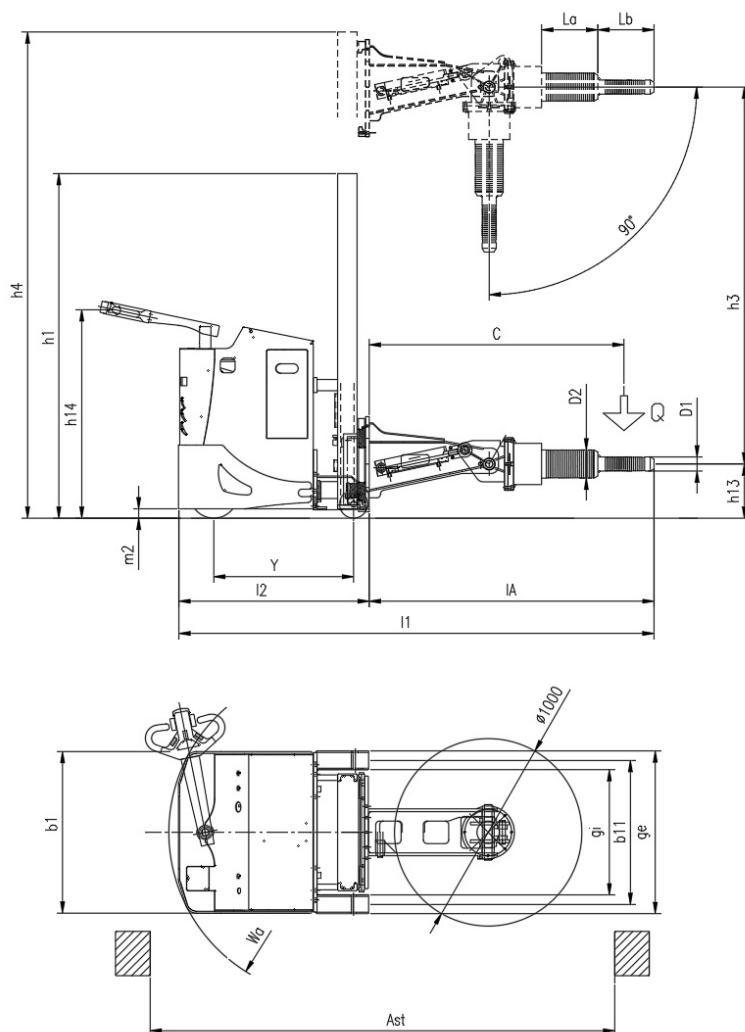
CS Italia s.r.l.



Optional su richiesta info@carrellispeciali.it 

SBCC-Z XTS ASPO 2506

CS Italia s.r.l.



Illustrazioni e dati tecnici non sono impegnativi. Il costruttore si riserva il diritto di apportare modifiche senza preavviso.

Tipologia SBCC-Z XTS ASPO 2506

Categoria

General info	1.1	Manufacturer			CSI s.r.l.
	1.2	Model			SBCC-Z XTS ASPO 2506
	1.3	Drive			elettrico AC
	1.4	Operator type			a timone
	1.5	Load capacity	Q	t	0.15
	1.6	Load centre	c	mm	1350
	1.9	Wheelbase	y	mm	750
Weights	2.1	Truck weight without battery		Kg	2200
Wheels and chassis	3.1	Wheels			Poliuretano
	3.2	Wheels size front		mm	254x100
	3.3	Wheels size rear		mm	200x80
	3.7	Rear wheelbase	b11	mm	825
	3.9	Overall width legs	ge	mm	868
	3.10	Inside width legs	gi	mm	668
	3.12	Front rotation	Rf	°	90
Dimensions	4.2	Height mast lowered	h1	mm	1790
	4.4	Lift height	h3	mm	2500
	4.5	Height mast extended	h4	mm	3050
	4.9	Height of tiller (min/max)	h14	mm	975/1535
	4.15	Height forks lowered	h13	mm	300
	4.19	Overall length	l1	mm	2540
	4.20	Length to face of forks	l2	mm	1020
	4.21	Overall width	b1	mm	862
	4.22c	Size of the reel	La/Lb/D1/D2	mm - Ø	300/300/74/148
	4.23	Carriage forks			FEM 2A
	4.31	Ground clearance		mm	40
	4.34	Aisle width	ast	mm	2360
	4.35	Turning radius	wa	mm	920
	Performance	5.1	Travel speed with/without load		Km/h
5.2		Lifting speed with/without load		m/s	0.11/0.33
5.3		Lowering speed with/without load		m/s	0.5/0.2
5.8		Maximum gradeability with/without load		%	1/3
5.10		Service brake			elettrico
Motor	6.1	Traction motor S2 60 min.		Kw	2.5
	6.2	Lift motor S3		Kw	3
	6.3	Battery			Piombo acido
	6.4	Battery - voltage and nominal capacity		V/Ah	24V 210Ah
	6.5	Battery weight		Kg	210
	Dim. batteria	Battery size		mm	810/210/450
Other	8.1	Traction control			proporzionale
	8.4	Noise level driver place			<70