

SBC XTS INOX 1504

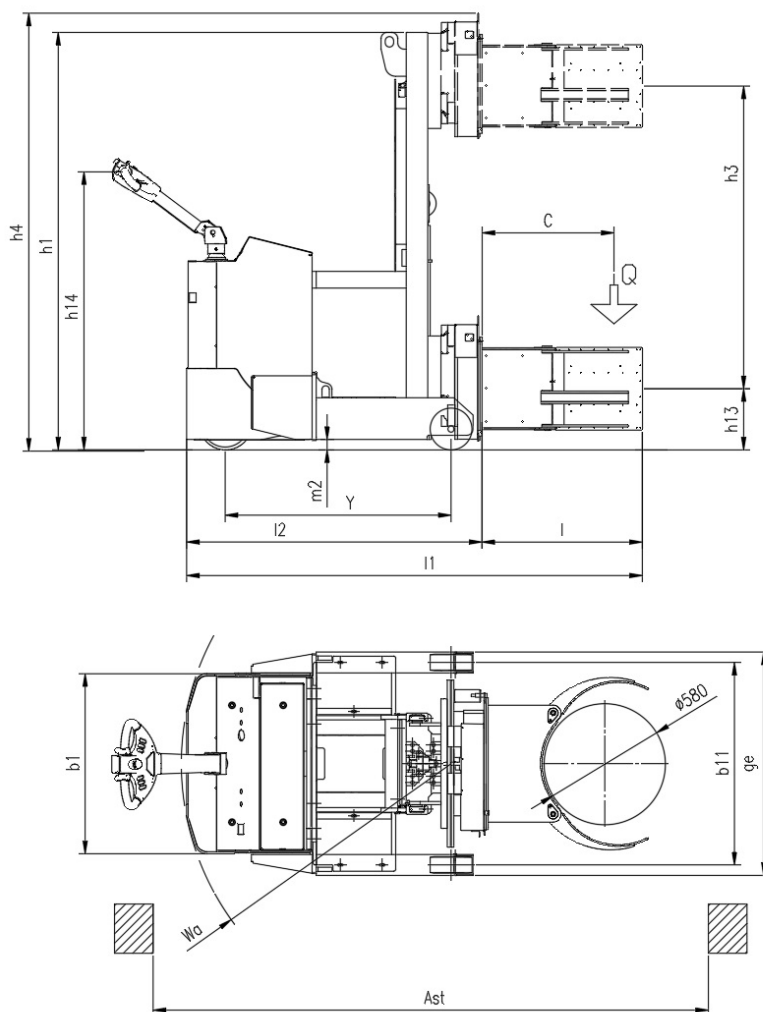
CS Italia s.r.l.



Optional su richiesta info@carrellispeciali.it ✉

SBC XTS INOX 1504

CS Italia s.r.l.



Illustrazioni e dati tecnici non sono impegnativi. Il costruttore si riserva il diritto di apportare modifiche senza preavviso.

Tipologia SBC XTS INOX 1504

Categoria Acciaio Inox

General info	1.1	Manufacturer			CSI s.r.l.
	1.2	Model			SBC XTS INOX 1504
	1.3	Drive			elettrico AC
	1.4	Operator type			a timone
	1.5	Load capacity	Q	t	0.4
	1.6	Load centre	c	mm	600
	1.9	Wheelbase	y	mm	1090
Weights	2.1	Truck weight without battery		Kg	1700
Wheels and chassis	3.1	Wheels			Poliuretano
	3.2	Wheels size front		mm	254x100
	3.3	Wheels size rear		mm	200X80
	3.5	Number of rear/front wheels (x = Traction wheel)			1x/2
	3.7	Rear wheelbase	b11	mm	970
	3.9	Overall width legs	ge	mm	1070
Dimensions	4.1	Tilt		°	/
	4.2	Height mast lowered	h1	mm	2000
	4.4	Lift height	h3	mm	1450
	4.5	Height mast extended	h4	mm	2090
	4.9	Height of tiller (min/max)	h14	mm	975/1535
	4.15	Height forks lowered	h13	mm	300
	4.19	Overall length	l1	mm	2180
	4.20	Length to face of forks	l2	mm	1450
	4.21	Overall width	b1	mm	862
	4.22	Forks dimensions	s/e/l	mm	730
	4.23	Carriage forks			FEM 2A
	4.31	Ground clearance		mm	50
	4.34	Aisle width	ast	mm	2620
	4.35	Turning radius	wa	mm	1290
	Performance	5.1	Travel speed with/without load		Km/h
5.2		Lifting speed with/without load		m/s	0,11/0,33
5.3		Lowering speed with/without load		m/s	0,5/0,2
5.8		Maximum gradeability with/without load		%	1/3
5.10		Service brake			elettrico
Motor	6.1	Traction motor S2 60 min.		Kw	2.5
	6.2	Lift motor S3		Kw	3
	6.3	Battery			GEL
	6.4	Battery - voltage and nominal capacity		V/Ah	24V/240Ah
	6.5	Battery weight		Kg	210
	Dim. batteria	Battery size		mm	810x210x450
Other	8.1	Traction control			proporzionale
	8.4	Noise level driver place			<70