

**TRS 30-70 MINIDONKEY**

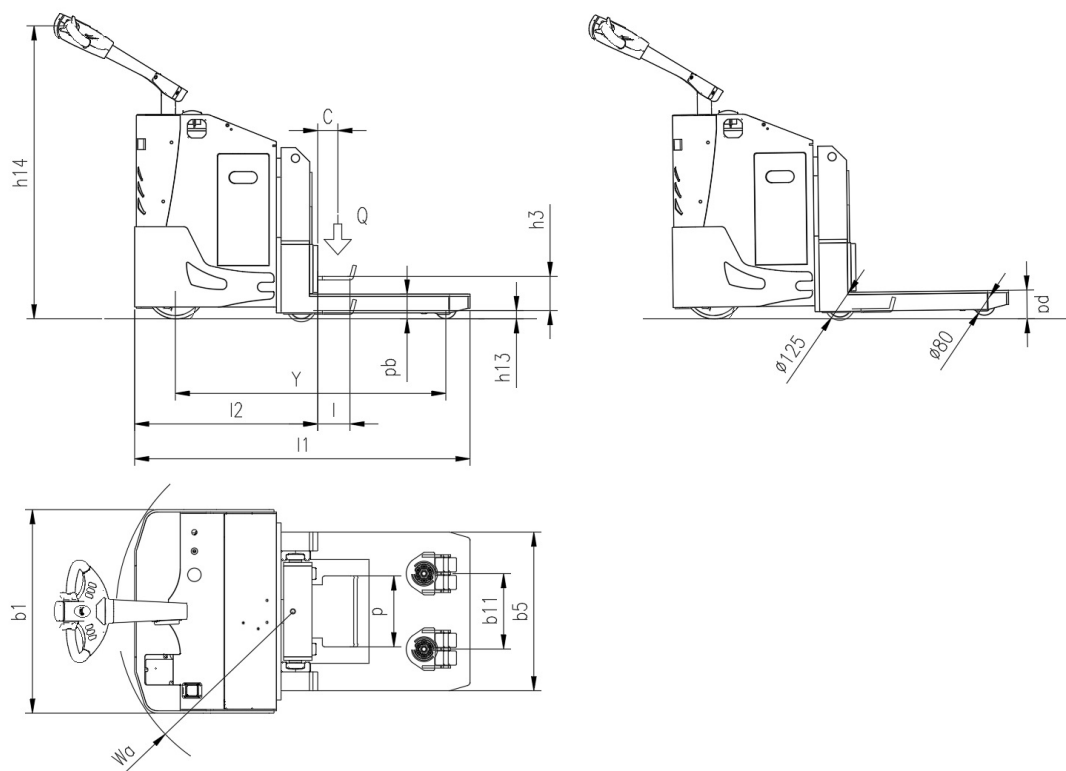
CS Italia s.r.l.



Optional su richiesta [info@carrellispeciali.it](mailto:info@carrellispeciali.it) ✉

# TRS 30-70 MINIDONKEY

CS Italia s.r.l.



Illustrazioni e dati tecnici non sono impegnativi. Il costruttore si riserva il diritto di apportare modifiche senza preavviso.

**Tipologia** TRS 30-70 MINIDONKEY

**Categoria** Aeroportuali

<b>General info</b>	1.1	Manufacturer			CSI s.r.l.
	1.2	Model			TRS 30-70 MINIDONKEY
	1.3	Drive			elettrico
	1.4	Operator type			a timone
	1.5	Load capacity	Q	t	3
	1.5a	Towing capacity	Q1	t	7
	1.6	Load centre	c	mm	85
	1.9	Wheelbase	y	mm	1145
	<b>Weights</b>	2.1	Truck weight without battery		Kg
<b>Wheels and chassis</b>	3.1	Wheels			Poliuretano
	3.2	Wheels size front		mm	254x100
	3.3	Wheels size rear		mm	125X40
	3.4	Additional wheels size		mm	80X60
	3.5	Number of rear/front wheels (x = Traction wheel)			1x+2/2+2
	3.7	Rear wheelbase	b11	mm	320
	<b>Dimensions</b>	4.4	Lift height	h3	mm
4.9		Height of tiller (min/max)	h14	mm	975/1535
4.15		Height forks lowered	h13	mm	35
4.19		Overall length	l1	mm	1420
4.20		Length to face of forks	l2	mm	775
4.21		Overall width	b1	mm	862
4.22		Forks dimensions	s/e/l	mm	137
4.22a		Pallet width	p	mm	300
4.25		Overall forks width size	b5	mm	672
4.26		Raised platform	pa	mm	120
4.27		Lowered platform	pb	mm	105
4.35		Turning radius	wa	mm	750
<b>Performance</b>		5.1	Travel speed with/without load		Km/h
	5.2	Lifting speed with/without load		m/s	0,04/0,05
	5.3	Lowering speed with/without load		m/s	0.5/0.2
	5.8	Maximum gradeability with/without load		%	1/3
	5.10	Service brake			elettrico
<b>Motor</b>	6.1	Traction motor S2 60 min.		Kw	2.5
	6.2	Lift motor S3		Kw	2.2
	6.3	Battery			Piombo acido
	6.4	Battery - voltage and nominal capacity		V/Ah	24V 240Ah
	6.5	Battery weight		Kg	210
	Dim. batteria	Battery size		mm	810/210/450
	<b>Other</b>	8.1	Traction control		
8.4		Noise level driver place			<70