

SBC XTS CRANE

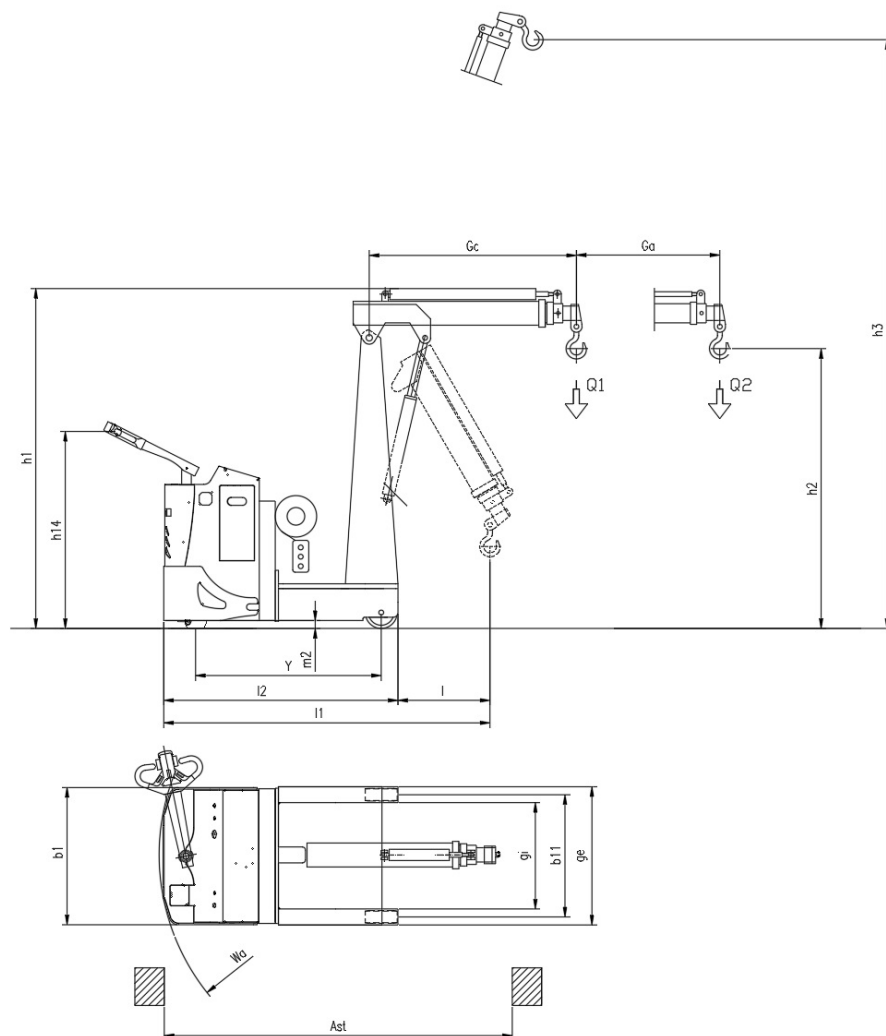
CS Italia s.r.l.



Optional su richiesta info@carrellispeciali.it ✉

SBC XTS CRANE

CS Italia s.r.l.



Illustrazioni e dati tecnici non sono impegnativi. Il costruttore si riserva il diritto di apportare modifiche senza preavviso.

Tipologia SBC XTS CRANE

Categoria Contrappesati

General info	1.1	Manufacturer			CSI s.r.l.
	1.2	Model			SBC XTS CRANE
	1.3	Drive			elettrico AC
	1.4	Operator type			a timone
	1.5	Load capacity	Q	t	0.7
	1.5s	Derated capacity	Q2	t	0.4
	1.6	Load centre	c	mm	/
	1.9	Wheelbase	y	mm	1170
	Weights				
	2.1	Truck weight without battery		Kg	2100
Wheels and chassis					
	3.1	Wheels			Poliuretano
	3.2	Wheels size front		mm	254x100
	3.3	Wheels size rear		mm	200x80
	3.5	Number of rear/front wheels (x = Traction wheel)			1x/2
	3.7	Rear wheelbase	b11	mm	770
	3.9	Overall width legs	ge	mm	868
	3.10	Inside width legs	gi	mm	668
Dimensions					
	4.2	Height mast lowered	h1	mm	2150
	4.3	Free lift	h2	mm	1750
	4.4	Lift height	h3	mm	3700
	4.9	Height of tiller (min/max)	h14	mm	975/1535
	4.19	Overall length	l1	mm	2430
	4.20	Length to face of forks	l2	mm	1230
	4.21	Overall width	b1	mm	862
	4.22e	Retracted arm	Gc	mm	1300
	4.22f	Stroke arm	Ga	mm	900
	4.31	Ground clearance		mm	40
	4.34	Aisle width	ast	mm	2180
	4.35	Turning radius	wa	mm	1395
Performance					
	5.1	Travel speed with/without load		Km/h	2/4
	5.10	Service brake			elettrico
Motor					
	6.1	Traction motor S2 60 min.		Kw	2.5
	6.2	Lift motor S3		Kw	3
	6.3	Battery			Piombo acido
	6.4	Battery - voltage and nominal capacity		V/Ah	24V/240 Ah
	6.5	Battery weight		Kg	210
	Dim. batteria	Battery size		mm	810x210x450
Other					
	8.1	Traction control			proporzionale
	8.4	Noise level driver place			<70